

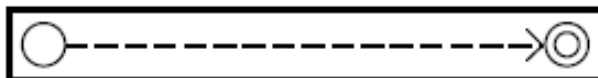
# Orienteering Course

[shac.org/camp-strake-leaders-guide](http://shac.org/camp-strake-leaders-guide)

Sequence	Latitude	Longitude	Comments
Start	30.617822 N	95.254781 W	STEM Building
1	30.615464 N	95.253134 W	Future Chapel Site
2	30.617731 N	95.251278 W	North of Campsite #1
3	30.622100 N	95.251081 W	Trail NW of Training Ctr
4	30.623303 N	95.255112 W	West of Lake Spillway
5	30.625055 N	95.254448 W	Road from Archery to Lake
6	30.625747 N	95.260593 W	South of ATV building
7	30.622606 N	95.257953 W	NW of climbing tower
8	30.619964 N	95.257466 W	West side of silt pond
9	30.617326 N	95.258206 W	Road west of Campsite #17
Finish	30.618887 N	95.254777 W	West of Grand Pavilion

Tsuru Scout Camp Orienteering Clue Sheet

Start	△	■			○		
1	001	○			○		Clearing East edge
2	002	***			○		Linear thicket South edge
3	003	—/—			○		Path North edge
4	004	⊗			○		Thicket Southeast edge
5	005	—/—			○		Path North edge
6	006	/			○		Road South side
7	007	/			○		Road North side
8	008	○			○		Clearing North edge
9	009	/			○		Road North side
10	010	○			○		Clearing West edge



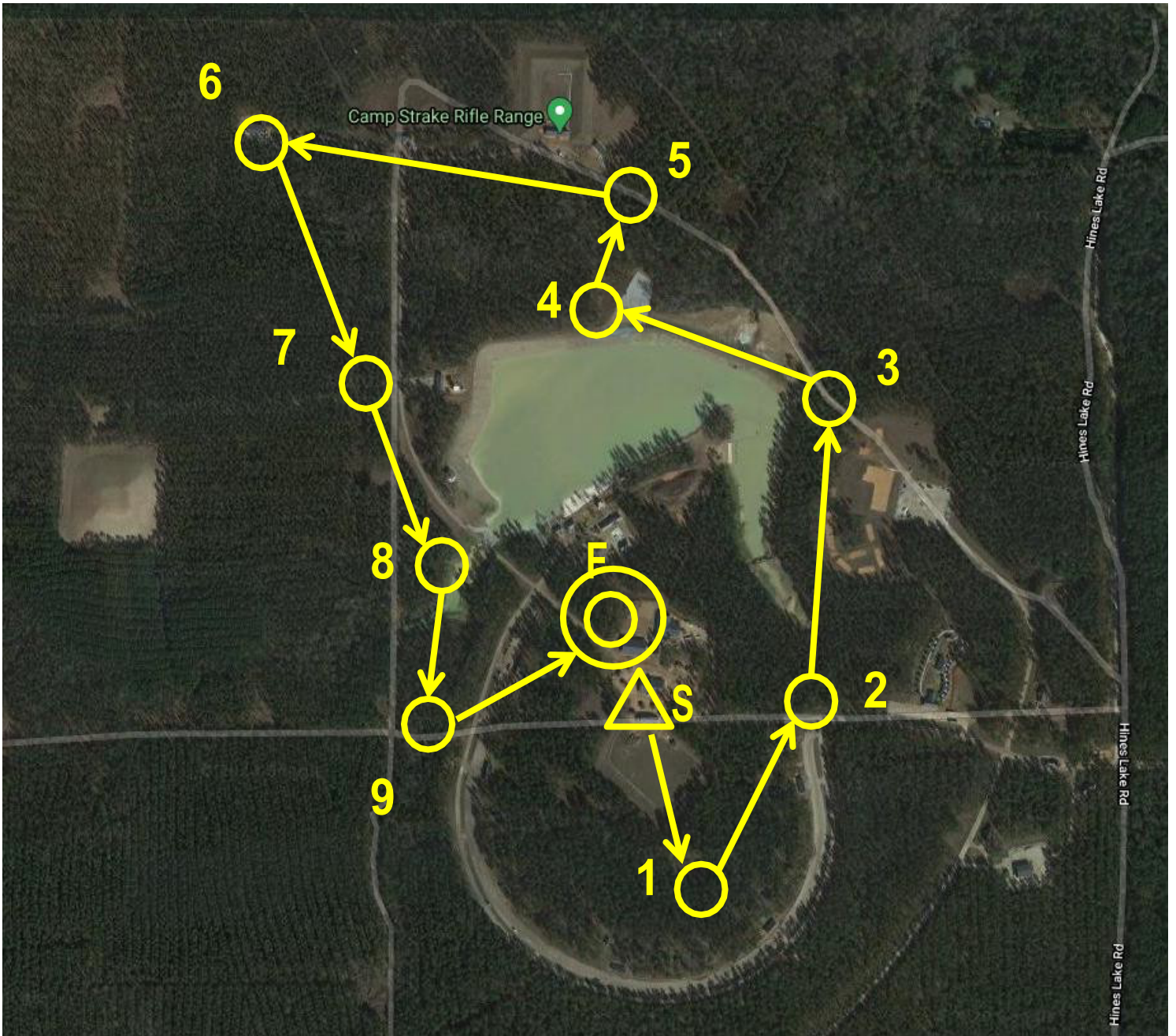
Tsuru Scout Camp Orienteering Course Punch Card Sheet

<b>Control Point</b>	<b>Reference</b>	<b>Punch #</b>	<b>Punch</b>
<b>S</b>	<b>Friendly</b>		
<b>1</b>	<b>Cheerful</b>	<b>1</b>	
<b>2</b>	<b>Courteous</b>	<b>2</b>	
<b>3</b>	<b>Kind</b>	<b>3</b>	
<b>4</b>	<b>Clean</b>	<b>4</b>	
<b>5</b>	<b>Trustworthy</b>	<b>5</b>	
<b>6</b>	<b>Loyal</b>	<b>6</b>	
<b>7</b>	<b>Helpful</b>	<b>7</b>	
<b>8</b>	<b>Obedient</b>	<b>8</b>	
<b>9</b>	<b>Thrifty</b>	<b>9</b>	
<b>F</b>	<b>Loyal</b>	<b>10</b>	



# Tsuru Scout Camp Orienteering Map

Final map is under construction. For now, please use the aerial photo version below.





Scale  
1: 5000

Lidar Source:  
TNRIS

Lidar processed  
w/OCAD by:  
Al Duquette

Veg Generation:  
Karttapullautin

0m 100m 300m 500m

Tsuru Scout Camp Orienteering Clue Sheet

Start	△	■				○			
1	001	○				○			Clearing East edge
2	002	***				○			Linear thicket South edge
3	003	—				○			Path North edge
4	004	⊗				○			Thicket Southeast edge
5	005	—				○			Path North edge
6	006	—				○			Road South side
7	007	—				○			Road North side
8	008	○				○			Clearing North edge
9	009	—				○			Road North side
10	010	○				○			Clearing West edge



Tsuru Scout Camp Orienteering Course Punch Card Sheet

<b>Control Point</b>	<b>Reference</b>	<b>Punch #</b>	<b>Punch</b>
<b>S</b>	<b>Friendly</b>		
<b>1</b>	<b>Cheerful</b>	<b>1</b>	
<b>2</b>	<b>Courteous</b>	<b>2</b>	
<b>3</b>	<b>Kind</b>	<b>3</b>	
<b>4</b>	<b>Clean</b>	<b>4</b>	
<b>5</b>	<b>Trustworthy</b>	<b>5</b>	
<b>6</b>	<b>Loyal</b>	<b>6</b>	
<b>7</b>	<b>Helpful</b>	<b>7</b>	
<b>8</b>	<b>Obedient</b>	<b>8</b>	
<b>9</b>	<b>Thrifty</b>	<b>9</b>	
<b>F</b>	<b>Loyal</b>	<b>10</b>	



## TSURU GEOCACHING COURSE

Cache #	Latitude	Longitude	Cache Name	Location
1	30.615467 N	95.253695 W	Reverence and Reflection	Future Chapel
2	30.617187 N	95.247325 W	Welcome Mat	Entrance Building
3	30.619995 N	95.251963 W	Sunshine Bridge	Bridge west of Training bldg
4	30.621333 N	95.253581 W	Showtime	Arena
5	30.622512 N	95.251482 W	Little Dutch Boy	Dam
6	30.625229 N	95.254942 W	William Tell	Archery Range
7	30.622671 N	95.257429 W	Stairway to Heaven	Climbing Tower
8	30.621508 N	95.263697 W	The Heights	Mt Franklin
9	30.620071 N	95.255895 W	Pirates Cove	Boathouse